

DS-A82024D

Network Storage Device

Overview

DS-A82024D is highly reliable controller framework storage product from Hikvision. Designed with highly reliable redundancy, no single point failure, it protects user data security in a perfect way. With SAN/CVR application integration, it provides high cost-effective video surveillance storage solution. The DS-A82024D applies to large and medium sized projects that demand high data security such as City Surveillance, Transportation, Banking, etc.

Order Models

DS-A82024D

Features

- **Highly Reliable System Design**

Developed with modularization no-cable design, double-controller framework, it supports caching real-time mirroring and BBU power-off permanent protection to improve system reliability.

- **High-performance & Easy-extensible Hardware Platform**

- High-performance Platform
64-bits multi-core processor,
Extensible high-speed memory;
SBB2.0 framework;
PCI-E2.0 bus and high-speed IO channel transmission.
- Extensible Port
Configured with multi-gigabit network interface, it supports SAS cascade extension and can be added with quintillion Ethernet port and 8Gb FC port to meet various application requirements.

- **Massive Storage Space**

Designed with high density chassis, 4U chassis with 24 HDs and it supports cascade extension. Single system supports at most 96 HDs.

- **Disk Detection, Repair and RAID Optimization**

- **Disk Detection and Repair**
It provides dryrun technique before the use as to prevent errors before the use;
It provides scanning test technique during the use as to alarm in time;
It provides repair technique and resurgence technique after the use as to improve disk service efficiency.
- **RAID**
It supports RAID 0,1,3,5,6,10,50 Raid Modes and overall and part hot standby as data security multi-protection.
It supports RAID instant set-and-use and supports logical volume dynamic online extension.



- **Advanced Data Protection**

- **System Information Real-time Backup**

It performs synchronous real-time backup with system key information in case that error of part of the hardware leads to the application being unrecoverable.

- **Data Tamper-proofing**

It provides data synchronization function between devices without any needed server.

- **Clone Technique**

When the RAID is not available, the data can be restored with clone technique as long as the HD is physically readable.

- **Low Power Design**

- **CPU Smart Frequency Adjustment**

CPU dynamically adjusts the operating frequency according to load to lower the system consumption.

- **Fan Smart Speed Adjustment**

It provides smart elaborate speed adjustment strategy to effectively improve the dissipation and lower the noise.

- **HDD Smart Hibernation**

It sets part or all no read-write HDD in hibernation mode according to the load condition to reduce energy dissipation and extend the lifespan of the HDD.

- **Friendly Operation & Maintenance Interface**

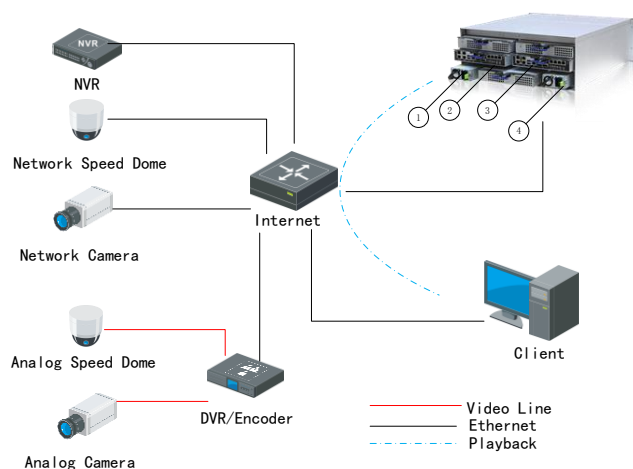
It provides one key configuration function so that users can accomplish the system configuration fast.

It provides friendly graphic interface, users can get operating status information of device in time (Key parts, storage resource, environment control information, etc.)

Provided with sufficient alarm management mode, it supports alarm modes such as indicator, SMS and E-mail to improve the device maintenance efficiency.

It supports jointing with NMS by SNMP to support multi-device centralized management.

Typical Applications



①④ Redundant Power

②③ Double Controller

Specifications

Performance Index

Mode	IPSAN	CVR
Resolution		
D1 (2Mbps)	256-ch	448-ch
Record + Playback		

Type		DS-A82024D
Video input & output	Record & Playback	IPSAN:256-ch (2Mbps) CVR:448-ch (2Mbps)
Controller	Processor	Double Controller (64 BIT Multi-core Processor)
	Memory	4GB per Controller (Can be extended to 8G)
Storage	Disk Amount	24
	Disk Interface	SAS/1TB、2TB、3TB、4TB (SSD is optional)
	Hot Plug Disk	Supports
	RAID Level	RAID 0、1、3、5、6、10、50、JBOD、Hot-Spare
Memory Management	Disk Management	Disk Detection Alert & Repair
	Logical Volume Management	iSCSI Volume, Record Volume
	Data Protection	System Information Real-time Backup, Volume Clone
Device Management	Management Mode	GUI based on Web, Serial Port CLI, Supports multidevice centralized management.
	Alarm Mode	Voice, Light, email, SMS, Page
	Log Download	USB drive Automatic Download, Login Webpage to Save Locally
Network Management	Network Protocol	iSCSI、NFS、CIFS、FTP、HTTP、AFP、FCP
External Interface	Data Interface	4kilomega Ethernet Port per Controller, Can Be Extended to 4*GE or 2*10GE or Extend 4*8G FC Interface
	Management Interface	1 kilomega Ethernet Port per Controller
	SAS Extension Interface	Supported
	COM Interface	UPS 2 USB Interfaces per Controller, 1 for HyperTerminal, 1 for Circumscribed Mobile Alarm
	USB Interface	2 USB Interfaces per Controller
Others	Power Interface	Redundant Power Source (1+1)
	Consumption (with HDD or DVD-R/W)	Working Consumption: ≤ 380W Rating Power Consumption: ≤1050W
	Environment Temperature	Working: 5℃~40℃ Storing: -20℃~70℃
	Environment Humidity	Working: 20%~80%RH (No Freezing, No Condensation) Storing: 5%~90%RH (No Freezing, No Condensation)
	Chassis	19 Inch 4U Standard Chassis
	Size	447mm (Width) × 172mm (Height) × 550mm (Depth)
	Weight (without HDD or DVD-R/W)	≤32Kg